

Swivel castor EDD 75x65 PK

Extra Heavy Duty Series EDD - Wheel RP



-30 °C - +80 °C

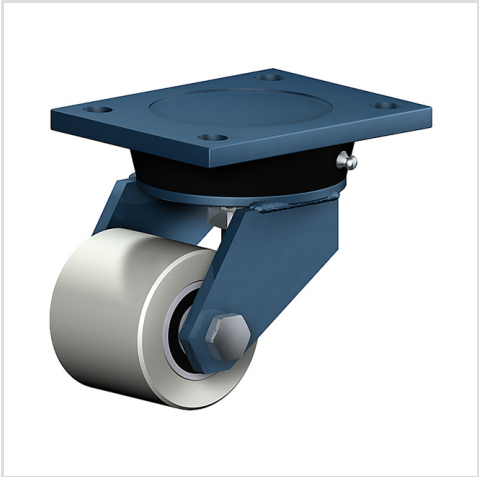
+++
swivels easily

+++
wear resistant

+++
shock proof

++
floor protective

+++
weather proof



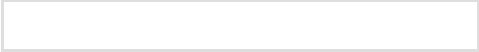
Wheel

high quality nylon wheel

Fork



For applications where a super strong and durable caster is required,
one tapered roller and one axial ball bearing,
dust protection ring,
very strong integrated Kingpin,
locked nut, grease nipple, wheel axle bolted,
finish – painted



Swivel castor	Wheel-Ø A x width B mm: 75x65
Load Capacity kg:	500
Load capacity tested according to EN 12530 and EN 12527	
Overall height H mm:	127
Dimension of top plate TP mm:	135x110
Hole spacing HS mm:	105x80
Hole-Ø HD mm:	13
Swivel radius SR mm:	98
Wheel bearing:	Ball bearing

Advantages

- ✓ easy running on smooth floors
- ✓ impact proof
- ✓ high abrasion resistance
- ✓ high chemical resistance

Applications

- Heavy duty dollies
- Metal-Technology
- Trash container trucks
- Machinery moving dollies
- Workshops
- Racks
- Carpentry
- Building-Industry